

There's more to the Internet than Google!

**Library & Information Service
Crawley Hospital
Tel: (01293) 600368
Internal x3368
library.crawley@sash.nhs.uk**

**Library & Information Service
East Surrey Hospital
Tel: (01737) 768511 ext 6056
Internal x 6056
library.esh@sash.nhs.uk**

www.surreyandsussex.nhs.uk/lis

Learning objectives

At the end of this session you should be able to:

- Use a search engine and multiple search engine, to find a website and add it to your favourites
- Interpret web addresses and evaluate websites for quality and reliability
- Search a selection of the following health information resources:
 - National Library for Health (NLH) *Evidence Based Reviews* and *Guidance* sections
 - Guidelines Finder
 - Clinical Knowledge Summaries
 - Images.MD
 - Hitting the Headlines
 - Specialist Libraries
 - Patient information

The Internet Explorer Toolbar

Internet explorer

Internet Explorer is a **browser**, a type of software used to look at documents on the Internet. To access the Internet double-click on the browser icon.



Toolbar buttons

The **back** button allows you to return to the previous page.

The **forward** button allows you to reverse a jump back. The forward button usually remains greyed out until the back button is used.

The **home** button takes you directly to the home page that has been set on the computer you are using (e.g. your Trust Intranet site)

Use **favorites** to bookmark frequently used pages

Use **stop** if you are trying to download a site and it is taking too long or if you are experiencing problems. **Stop** will abandon the download altogether

If you wish to try downloading the site again, click once on the **refresh** button.

The Internet Address (URL) box

Each page on the Internet has a unique address.

These addresses are also known as URLs.

For example the NLH website address is: www.library.nhs.uk

If you type this address in the **address box** and hit return, you will go to the NLH website.

If you do not know the address you are trying to find you can search for it by using a search engine or directory

Search engines and multiple search engines

General search engines

There are many general search engines available for searching the Internet. Some general search engines are listed below:

<u>Name</u>	<u>Address (URL)</u>
Google	http://www.google.co.uk
Altavista	http://www.altavista.com/
Lycos	http://www.lycos.com/

Search engines work by matching your words or phrases to the number of times a word is repeated on a webpage, or a computer code that sits behind the webpage.

Multiple search engines

No one search engine is capable of searching every single site on the Internet.

Multiple search engines run your query across several search engines, giving you a wider set of results than if you used just one search engine, with more coverage of the Internet.

<u>Name</u>	<u>Address (URL)</u>
Dogpile	www.dogpile.com
Metacrawler	www.metacrawler.com
Search.com	www.search.com

Assessing quality on the Internet

Interpreting web addresses

The ending of the URL indicates the origin of the site:

- National Health Service sites end .nhs.uk
- Government sites end .gov.uk
- Academic institutions end .ac.uk
- Registered organisations end .org.uk (e.g. charities, associations etc)
- Commercial organisations end .com or .co.uk

Evaluating the quality of a website

Unfortunately the quality and reliability of information retrieved by search engines cannot be guaranteed. Think about these points when you look at a website:

- Who put it there?
- When did they put it there?
- Is the information within the site current?
- Why did they put it there?
- From where did they get their information?

Adding a website to your Favorites

You can mark sites to return to at a future date by saving them as **favorites**:

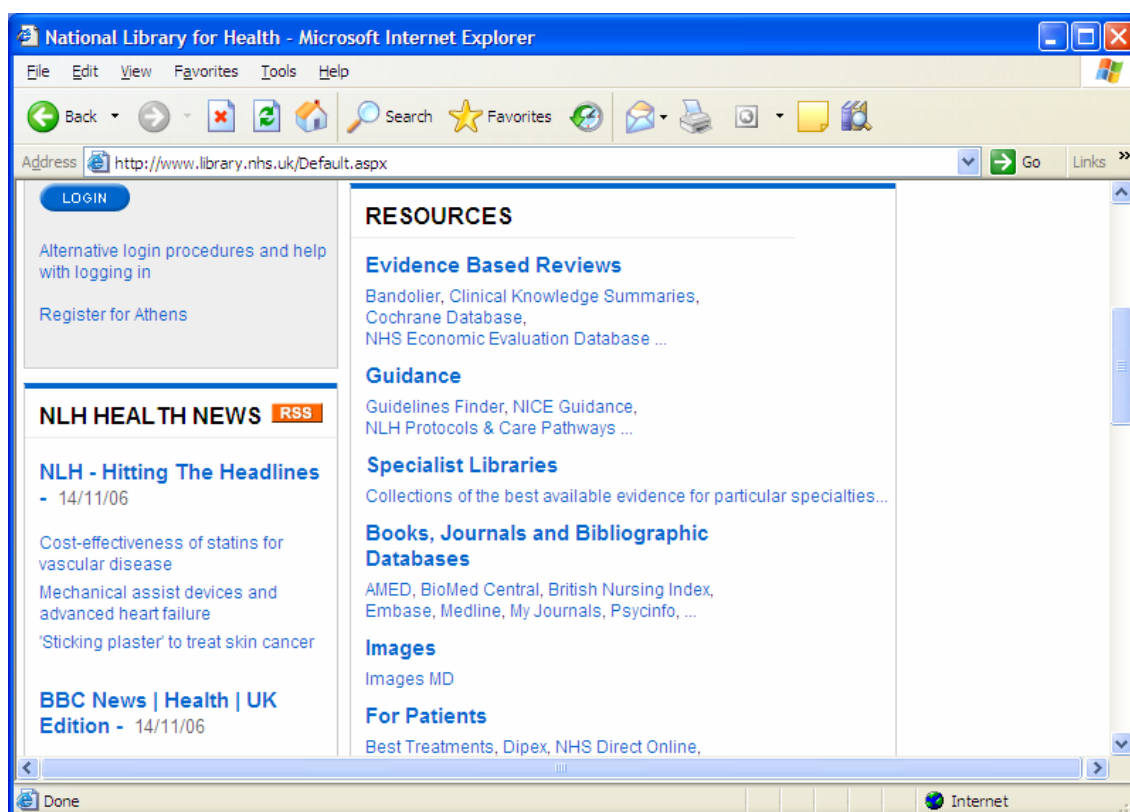
- Click once on the **favorites** option on the menu bar
- Click on **Add to favorites**.
- Choose a name for the website you are adding that you will later recognise
- The website will be stored for future reference.
- Next time you login to Internet Explorer click on **favorites** and the site will appear in your list of favorites
- You can sort your saved sites into folders by clicking on the **Organize favorites** button under **favorites**.

Quality Health Resources

The National Library for Health (NLH)

NLH is the NHS gateway to a broad spectrum of health information. It is a 'one-stop shop' for all health workers divided into general resources and specialist sections.

To get to NLH type the following address: **www.library.nhs.uk**



Within the NLH:

- The *Guidance* section aims to promote the sharing and dissemination of good practice
- The *Evidence Based Reviews* section aims to provide easy access to the best current knowledge available
- The *Books, Journals and Bibliographic Databases* section links to medical, nursing, allied health, management and mental health databases

Guidance

A key resource within the Guidance section is the Guidelines Finder:

Guidelines Finder:

The Guidelines Finder holds over 1500 fully downloadable UK national guidelines (including NICE). It is updated on a weekly basis.

It can be searched by speciality (e.g. Obstetrics) or keyword (e.g. caesarean)

The screenshot shows the NHS Guidelines Finder Specialist Library search results page. The page is titled "Guidelines Finder Specialist Library" and "National Library for Health". The search results are for "Specialty > Dermatology" with a total of 141 records. The search criteria are "Guidelines Finder" and "GO". The search results options include "Search within results:", "Sort by: Title", "Show summaries: [checked]", and "Per page: 10". The search results list "Acne vulgaris" with the publisher "PRODIGY", publication type "Care Guideline", and publication date "01 Feb 2003".

Evidence Based Reviews

The Evidence Based Reviews section contains Clinical Knowledge Summaries:

Clinical Knowledge Summaries:

The guidance section offers guidance on the management of conditions that are commonly seen in primary care. The patient information leaflets section contains easily readable and printable patient information leaflets useful to a cross section of clinical specialities/settings, simple patient orientated diagrams designed to be printed easily, and useful self help contacts.

The screenshot shows the NHS Evidence Based Reviews section. The search criteria are "All CKS content" and "GO". The search results options include "CKS Home", "Help", "About us", and "Contact us". The search results list "Patient information leaflets" for "Condition - Joints / Muscles / Bones (musculoskeletal)". The search results include a table of patient information leaflets:

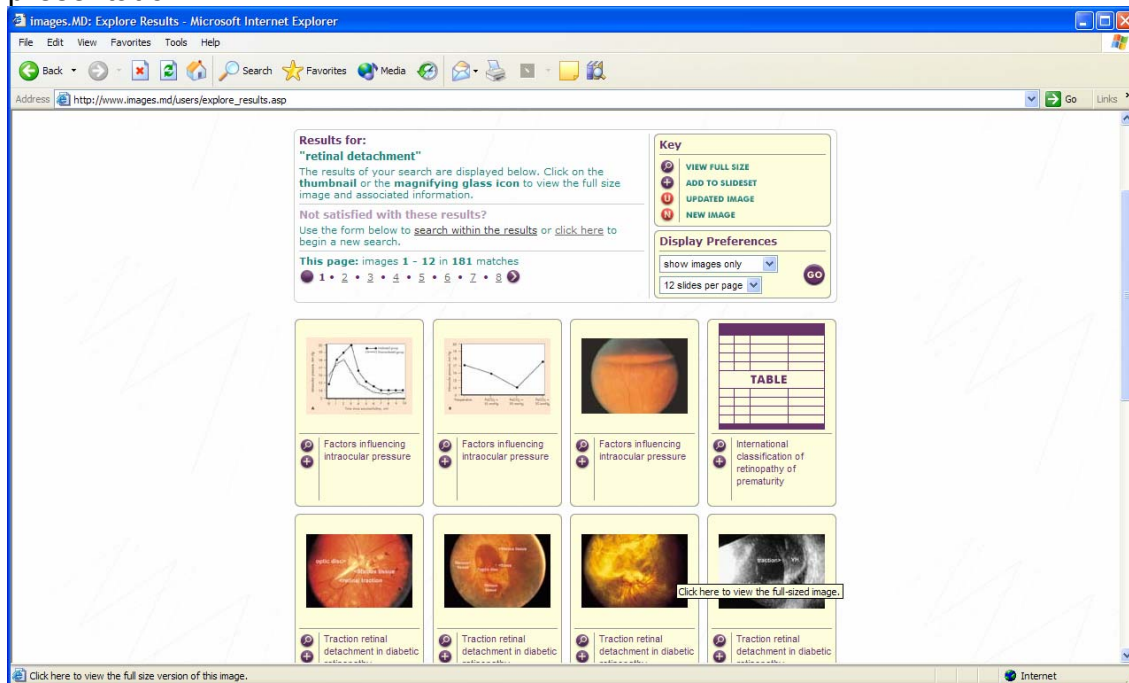
Name	HTML	PDF
Ankylosing Spondylitis		(124 KB)
Anti-inflammatory Painkillers		(87 KB)
Arthroscopy and Arthroscopic Surgery		(84 KB)
Back Pain		(99 KB)
Back Pain - A Summary		(51 KB)

Images

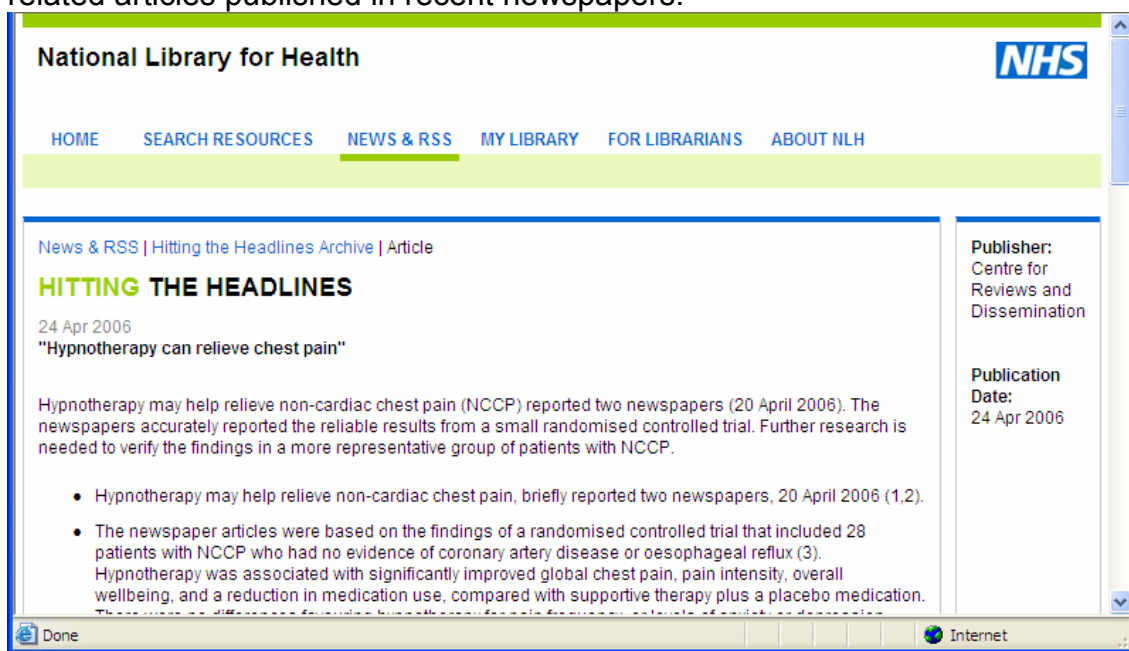
The Images section contains Images.MD:

Images.MD

This online encyclopaedia of medical images allows you to search by medical subject area or keyword, producing photographs, diagrams, tables, X-rays and other downloadable graphics, either individually or as a PowerPoint presentation.



In addition you can search **Hitting the Headlines** for critically appraised health related articles published in recent newspapers:



Search the **Specialist Libraries** for links and resources pertinent to your own discipline, for example: Emergency Care, Child Health or Diabetes:

Useful Websites

Address	Good for
www.patient.co.uk	Patient orientated information, leaflets, websites and contact details of consumer health bodies
http://www.nrr.nhs.uk/search.htm	The National Research Register hosts a database of ongoing and completed health research projects from the NHS and wider health community
www.tripdatabase.com	The TRIP (Turning Research into Practice) database searches over 55 high quality medical sites containing evidence based material.